

Rain Wax Plus

Standards



Product specifications

o Specic weight: **0,965-0,985**

o Colour:

o pH:

o Drying:

o Shine:

o Packaging:



Product description

This wax forms a thin water-repellent layer that speeds up the drying process. It also offers lasting protection and improves visibility in adverse weather conditions by causing the rain to disperse at driving speeds over 80 km/h – no windscreen wipers required. The product also boosts shine and protects the surface of the vehicle.

Storage

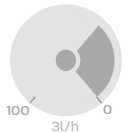
Keep tightly closed, avoiding exposure to UV rays and extreme temperatures. For more information, we recommend referring to the safety sheet.

Directions for use

Product designed for:



A dosing pump is used to apply the product in rollovers and tunnels. We recommend using purified water, maintaining the dosing rate at around 13 mL/min and trying to keep the pump at a percentage of around 25%.



+25%
Bay and tunnel pump

Rain Wax Plus

