

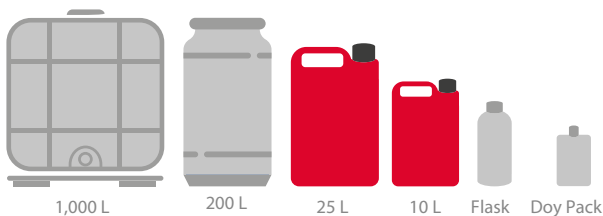
Infinite Mousse

Standards



Product specifications

- Specific weight: 1.02-1.04
- Colour:
- pH:
- Foaming:
- Packaging:



Product description

This product is specially designed for foam screen and foam gun applications. It boasts impressive cleaning power and excellent foaming properties that facilitate the car wash process. It can be used as an active foam and requires a lower dose than the other products.

Storage

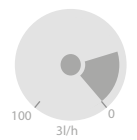
Keep tightly closed, avoiding exposure to UV rays and extreme temperatures.
For more information, we recommend referring to the safety sheet.

Directions for use

Product designed for:

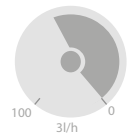


A dosing pump is used to apply the product in high-pressure Jet washes. The recommended dosing rate for hard water (400 ppm) is around 20 ml/min, trying to keep the pump level between 15 and 20%. The volume of chemical product can be reduced slightly to around 18 ml/min when using purified water.



15-20%
High-pressure pump

A dosing pump is used to apply the product in rollovers and tunnels. The recommended dosing rate for hard water (400 ppm) is around 60 mL/min, trying to keep the pump at a percentage of between 50 and 60%. The volume of chemical product can be reduced slightly to around 45 ml/min when using purified water.



50-60%
Bay and tunnel pump

Infinite Mousse

